

# New Zealand Data Sheet

## IPCA-FRUSEMIDE

---

### 1. IPCA-FRUSEMIDE (20mg & 40mg tablets)

IPCA-FRUSEMIDE 20mg tablets

IPCA-FRUSEMIDE 40mg tablets

### 2. QUALITATIVE AND QUANTITATIVE COMPOSITION

#### Name and strength of the active substance

Each 20mg tablet contains 20mg of furosemide

Each 40mg tablet contains 40mg of furosemide

#### Excipient(s) with known effect

IPCA-FRUSEMIDE tablets contain lactose

IPCA-FRUSEMIDE tablets are gluten free and free of azo dyes

For the full list of excipients, see section 6.1

### 3. PHARMACEUTICAL FORM

IPCA-FRUSEMIDE 20mg tablets are white to off-white, round tablets, debossed with "F2" on one side and plain on the other side.

IPCA-FRUSEMIDE 40mg tablets are white to off-white, round tablets, debossed "F4" on one side and breakline on the other side.

### 4. CLINICAL PARTICULARS

#### 4.1 Therapeutic indications

##### Oedema:

Furosemide is indicated in adults, infants and children for the treatment of oedema associated with congestive heart failure, cirrhosis of the liver and renal disease including the nephrotic syndrome.

Furosemide is particularly useful when an agent with greater diuretic potential than that of those commonly employed is desired.

##### Hypertension:

Furosemide may be used in adults for the treatment of hypertension alone or in combination with other antihypertensive agents. Hypertensive patients who cannot be adequately

# IPCA-FRUSEMIDE

---

controlled with thiazides will probably also not be adequately controlled with furosemide alone.

## 4.2 Dose and method of administration

The effectiveness of this product is based on its bioequivalence to the Australian innovator. It cannot be confirmed if the Australian innovator is the same as the New Zealand innovator, so this product may not be interchangeable with other similar products on the New Zealand market.

### Dose

It is recommended that furosemide tablets be taken on an empty stomach.

### Oedema:

Therapy should be individualised according to patient's response. This therapy should be titrated to gain maximal therapeutic response with the minimum dose possible to maintain that diuretic response.

### Adults:

The usual initial daily dose is 20 to 80mg given as a single dose. If the diuretic response to a single dose of 20 to 80mg is not satisfactory, increase this dose by increments of 20 to 40mg, not sooner than 6 to 8 hours after the previous dose, until the desired diuretic effect is obtained. This individually determined dose should be given once or twice (e.g. at 8am and 2pm) daily. The dose of furosemide may be carefully titrated up to 400mg/day (except in advanced renal failure) in those patients with severe clinical oedematous states. The mobilisation of oedema may be most efficiently and safely accomplished by giving furosemide on 2 to 4 consecutive days each week.

When doses exceeding 80mg/day are given for prolonged periods, careful clinical laboratory observations are particularly advisable.

### Infants and Children:

The usual initial dose of oral furosemide for infants and children is 2mg/kg body weight given as a single dose. If the diuretic response is not satisfactory, the dose may be increased by 1 to 2mg/kg no sooner than 6 to 8 hours after the previous dose. Doses greater than 6mg/kg body weight are not recommended.

For maintenance therapy in infants and children, the dose should be adjusted to the minimum effective level.

### Hypertension:

Therapy should be individualised according to the patient's response. This therapy should be titrated to gain maximal therapeutic response with the minimum dose possible to maintain that therapeutic response.

### Adults:

# IPCA-FRUSEMIDE

---

The usual initial daily dose of furosemide for hypertension is 80mg, usually divided into 40mg twice a day. Dosage should then be adjusted according to response. If response is not satisfactory, additional antihypertensive agents may be necessary.

Changes in blood pressure must be carefully monitored when furosemide is used with other antihypertensive medicines, especially during initial therapy.

To prevent an excessive drop in blood pressure, the dosage of other agents should be reduced by at least 50% when furosemide is added to the regimen. As the blood pressure falls under the potentiating effect of furosemide, a further reduction in dosage or even discontinuation of other antihypertensive medicines may be necessary.

## **Method of administration**

Furosemide is to be taken orally and it is recommended that the tablets are taken on an empty stomach.

## **Maximum Tolerated Daily Dose**

See above section on Dose

## **4.3 Contraindications**

Known hypersensitivity to furosemide or sulfonamides or any of the inactive ingredients (see Section 6.1 List of excipients). Patients allergic to sulfonamides (e.g. sulfonamide antibiotics or sulfonyleureas) may show cross sensitivity to furosemide.

Complete renal shutdown; impaired renal function or anuria. If increasing azotaemia and oliguria occur during treatment of severe progressive renal disease, discontinue furosemide. Severe hypokalaemia (see Section 4.8 Undesirable effects), hyponatraemia, hypovolaemia, dehydration or hypotension must be regarded as contraindications until serum electrolytes, fluid balance and blood pressure have been restored to normal levels.

In hepatic coma or pre-coma and conditions producing electrolyte depletion, furosemide therapy should not be instituted until the underlying conditions have been corrected or ameliorated.

### **Furosemide is contraindicated in breast feeding or pregnant women.**

Do not administer furosemide to newborns presenting jaundice or to infants with conditions which might induce hyperbilirubinemia or kernicterus (e.g. Rhesus incompatibility, familial non-haemolytic jaundice etc.) because of furosemide's in vitro potential to displace bilirubin from albumin.

## **4.4 Special warnings and precautions for use**

Excessive diuresis may result in dehydration and reduction in blood volume with circulatory collapse and with the possibility of vascular thrombosis and embolism, particularly in elderly patients.

# IPCA-FRUSEMIDE

---

Excessive loss of potassium in patients receiving cardiac glycosides may precipitate digitalis toxicity.

In patients with hepatic cirrhosis and ascites, initiation of therapy with furosemide is best carried out in hospital. Sudden alterations of fluid and electrolyte balance in patients with cirrhosis may precipitate hepatic coma, therefore, strict observation is necessary during the period of diuresis.

Cases of reversible or irreversible tinnitus or hearing impairment have been reported. Usually, reports indicate that furosemide ototoxicity is associated with severe renal impairment, hypoproteinaemia, doses exceeding several times the usual recommended dose, or concomitant therapy with aminoglycoside antibiotics, ethacrynic acid, or other ototoxic medicines. In patients with hypoproteinaemia, e.g. associated with nephrotic syndrome, the effect of furosemide may be weakened and its ototoxicity potentiated. Cautious dose titration is required.

Caution should be exercised when administering curare or its derivatives to patients undergoing furosemide therapy. It is also advisable to discontinue furosemide for one week prior to any elective surgery.

Caution should be exercised and the risks and benefits of combining risperidone with furosemide or other potent diuretics should be considered prior to the decision to treat. In the risperidone placebo-controlled trials in elderly patients with dementia, a higher incidence of mortality was observed in patients treated with furosemide plus risperidone (7.3% ; mean age 89 years, range 75 to 97) compared to treatment with risperidone alone (3.1% ; mean age 84 years, range 70 to 96) or furosemide alone (4.1% ; mean age 80 years, range 67 to 90). Concomitant use of risperidone with other diuretics (mainly thiazide diuretics used in low doses) was not associated with similar mortality findings. No pathophysiological mechanism has been identified to explain this finding and no consistent pattern for cause of death was observed. Nevertheless, caution is advised. Irrespective of treatment, dehydration was an overall risk factor for mortality and should, therefore, be carefully avoided in elderly patients with dementia.

Rigid sodium restriction is conducive to both hyponatraemia and hypokalaemia, thus strict restriction of sodium intake is not advisable in patients receiving furosemide.

Furosemide should be used with care, especially in the initial stages, in patients with impairment of micturition (e.g. prostatic hypertrophy). Urinary outflow must be secured. In patients with a partial obstruction of urinary outflow (e.g. in patients with bladder-emptying disorders, prostatic hyperplasia or narrowing of the urethra), increased production of urine may provoke or aggravate complaints. Thus, these patients require careful monitoring.

Particularly careful monitoring is required in patients with gout, patients with partial obstruction of urinary outflow, in patients with hypotension or who are at particular risk from a pronounced fall in blood pressure (e.g. patients with significant Stenosis of the coronary arteries or of the blood vessels supplying the brain), in patients with latent or manifest diabetes mellitus, in patients with hepatorenal syndrome or in patients with hypoproteinaemia (e.g. associated with nephrotic syndrome). Dose titration, especially in this latter case, is required. In premature infants, there is the possible development of nephrocalcinosis/nephrolithiasis and therefore renal function must be monitored and renal

# IPCA-FRUSEMIDE

---

ultrasonography performed. In premature infants, furosemide administered during the first weeks of life may increase the risk of persistence of Botallo's duct.

As with any effective diuretic, electrolyte depletion may occur during therapy with furosemide, especially in patients receiving higher doses and a restricted salt intake. All patients receiving furosemide therapy should be observed for signs of fluid or electrolyte imbalance; namely hyponatraemia, hypochloaemic alkalosis, and hypokalaemia. Periodic determinations of serum electrolytes to detect a possible imbalance should be performed at appropriate intervals, as well as creatinine, blood urea and CO<sub>2</sub> content determinations. This is particularly important when the patient is at high risk of developing electrolyte imbalances (e.g. receiving parenteral fluids) or in case of significant additional fluid loss such as vomiting, diarrhea and intense sweating. Warning signs of an imbalance, irrespective of cause, include dryness of mouth, thirst, weakness, lethargy, drowsiness, restlessness, muscle pains or cramps, muscular fatigue, hypotension, oliguria, tachycardia, arrhythmia, and gastrointestinal disturbances such as nausea and vomiting. Hypovolaemia or dehydration as well as any significant electrolyte and acid-base disturbances must be corrected. This may require temporary discontinuation of furosemide.

During long-term therapy, a high potassium diet is recommended. Potassium supplements may be required, especially when high doses are used for prolonged periods. Particular caution with potassium is necessary when the patient is on digitalis glycosides, potassium depleting steroids or in the case of infants and children. Potassium supplementation, diminution in dose, or discontinuation of furosemide therapy may be required.

Periodic checks on urine and blood glucose should be made in diabetics and even those suspected of latent diabetes when receiving furosemide. Increases in blood glucose and alterations in glucose tolerance tests with abnormalities of the fasting and 2-hour post prandial sugar have been observed, and rare cases of precipitation of diabetes mellitus have been reported.

Furosemide may lower calcium levels, and rare cases of tetany have been reported. Accordingly, periodic serum calcium levels should be obtained.

Reversible elevations of blood urea may be seen. These have been observed in association with dehydration, which should be avoided, particularly in patients with renal insufficiency.

Furosemide increases cholesterol and triglycerides short-term. It is not clear whether this effect persists long-term; however, the current evidence does not indicate this.

As with many other medicines, patients should be observed regularly for the possible occurrence of blood dyscrasias, liver damage, or other idiosyncratic reactions.

The possibility exists of exacerbation or activation of systemic lupus erythematosus.

Asymptomatic hyperuricaemia can occur and rarely, gout may be precipitated.

# IPCA-FRUSEMIDE

---

## 4.5 Interaction with other medicines and other forms of interaction

### Interactions with Food

Whether and to what extent the absorption of furosemide is affected by taking it with food seems to depend on the pharmaceutical formulation of furosemide. It is recommended that furosemide tablets be taken on an empty stomach.

### Interactions with other Medicines

#### Combinations that are not recommended

Furosemide may increase the ototoxic and nephrotoxic potential of certain antibiotics (e.g. aminoglycosides and certain cephalosporins (e.g. cephaloridine) and other ototoxic medicines, especially in the presence of impaired renal function, therefore the simultaneous administration of these medicines is not advisable.

Anticonvulsants may decrease the response to furosemide.

In isolated cases intravenous administration of furosemide within 24 hours of taking chloral hydrate may lead to flushing, sweating attacks, restlessness, nausea, tachycardia and elevation of blood pressure. As a result, this combination is not recommended.

#### Precautions for use

Furosemide should not be used concomitantly with ethacrynic acid or cisplatin because of the possibility of ototoxicity. In addition, nephrotoxicity of cisplatin may be enhanced if furosemide is not given in low doses (e.g. 40mg in patients with normal renal function) and with positive fluid balance when used to achieve forced diuresis during cisplatin treatment.

Furosemide decreases the excretion of lithium salts and may cause increased serum lithium levels, resulting in increased risk of lithium toxicity, including increased risk of cardiotoxic and neurotoxic effects of lithium. Therefore, it is recommended that lithium levels are carefully monitored in patients receiving this combination.

Furosemide and sucralfate must not be taken within two hours of each other because sucralfate decreases the absorption of furosemide from the intestine and hence, reduces its effect.

The action of other antihypertensive medicines may be potentiated by furosemide, especially in combination with ACE inhibitors. The administration of ACE inhibitors to patients pretreated with furosemide may lead to a deterioration in renal function including renal failure, or may result in severe hypotension especially when an angiotensin converting enzyme inhibitor (ACE inhibitor) or angiotensin II receptor antagonist is given for the first time or for the first time in an increased dose. Consideration must be given to interrupting the administration of furosemide temporarily or at least reducing the dose of furosemide for 3 days before starting treatment with or increasing the dose of an ACE inhibitor or angiotensin II receptor antagonist.

Caution should be exercised and the risks and benefits of treating a patient on risperidone with furosemide or other potent diuretics should be considered prior to the decision to use. See Warnings and Precautions regarding increased mortality in elderly patients with dementia concomitantly receiving risperidone.

# IPCA-FRUSEMIDE

---

High doses of furosemide may inhibit binding of thyroid hormones to carrier proteins when administered with levothyroxine, and thereby lead to an initial transient increase in free thyroid hormones, followed by an overall decrease in total thyroid hormone levels. It is recommended that thyroid hormones be monitored.

## Take into account

The effects of digitalis preparations and medicines inducing QT interval prolongation syndrome may be potentiated by changes in electrolyte concentrations (e.g. hypokalaemia, hypomagnesaemia) due to furosemide. When a cardiac glycoside is administered concurrently, it should be remembered that potassium or magnesium deficiency increases the sensitivity of the myocardium to digitalis and may increase the toxicity of drugs, which induce QT interval prolongation syndrome. When a glucocorticoid is administered during diuretic treatment, the potassium-lowering effect of the steroid should be borne in mind (see Section 4.4 Special Warnings and Precautions for Use). Carbenoxolone, corticosteroids, prolonged use of laxatives or ingestion of liquorice in large amounts may also predispose a patient to hypokalaemia.

Patients receiving high doses of salicylates, as in rheumatic disease, in conjunction with furosemide may experience salicylate toxicity at lower doses because of competitive renal excretory sites.

Interactions between furosemide and neuromuscular blocking agents have been reported. These appear to be dependent on the dose of furosemide and the neuromuscular blocking agent involved. Low doses of furosemide (0.1-10µg/kg) enhance the neuromuscular blockade of tubocurarine and succinylcholine. High doses (1-5mg/kg) of furosemide have a tendency to antagonise the skeletal muscle relaxing effect of tubocurarine but may potentiate the action of succinylcholine. The clinical relevance of these findings is uncertain.

The combination of furosemide and amphotericin may result in an excessive loss of potassium.

Furosemide may decrease arterial responsiveness to noradrenaline. This diminution is not sufficient to preclude effectiveness of the pressor agent for therapeutic use.

If antihypertensive agents, diuretics or other medicines with blood pressure lowering potential are given concomitantly with furosemide, a more pronounced fall in blood pressure must be anticipated.

Non-steroidal anti-inflammatory medicines including acetylsalicylic acid may reduce the natriuretic and antihypertensive effects of furosemide in some patients by inhibiting prostaglandin synthesis. In patients with dehydration or pre-existing hypovolaemia, non-steroidal anti-inflammatory medicines may cause renal failure. Salicylate toxicity may be increased by furosemide.

Phenytoin, methotrexate, probenecid and other medicines which, like furosemide, undergo significant renal tubular secretion may reduce the effects of furosemide. Conversely, furosemide may decrease renal elimination of these medicines. In case of high dose treatment (in particular of both furosemide and the other medicines), this may lead to an increased risk of adverse effects due to furosemide or the concomitant medication.



# IPCA-FRUSEMIDE

---

The effects of curare-type muscle relaxants or of theophylline may be increased.

It should be borne in mind that the effect of antidiabetics or of pressor amines, (e.g. adrenaline, noradrenaline) may be attenuated by furosemide (see Section 4.4 Special Warnings and Precautions for Use)

Impairment of renal function may develop in patients receiving concurrent treatment with furosemide and high doses of certain cephalosporins. The harmful effects of nephrotoxic medicines on the kidney may be increased.

Concomitant use of cyclosporine A and furosemide is associated with increased risk of gouty arthritis secondary to furosemide-induced hyperuricaemia and cyclosporine impairment of renal urate excretion.

Patients who were at high risk for radiocontrast nephropathy treated with furosemide experienced a higher incidence of deterioration in renal function after receiving radiocontrast compared to high-risk patients who received only intravenous hydration prior to receiving radiocontrast.

## **4.6 Fertility, pregnancy and lactation**

### **Pregnancy**

Category C

Furosemide must not be given during pregnancy unless there are compelling medical reasons. Treatment during pregnancy requires monitoring of foetal growth.

Thiazides, related diuretics and loop diuretics enter the foetal circulation and may cause electrolyte disturbances. Neonatal thrombocytopaenia has been reported with thiazides and related diuretics. Loop diuretics, like furosemide and bumetanide, are probably also associated with this risk. During the latter part of pregnancy, products of this type should only be given on sound indications, and then in the lowest effective dose. In pregnancy, furosemide must only be used in patients with a marked reduction in glomerular filtration.

### **Breast-feeding**

Furosemide passes into the breast milk and inhibits lactation. Women must not breast feed if being treated with furosemide.

### **Fertility**

No information is available.

## **4.7 Effects on ability to drive and use machines**

Some adverse effects (e.g. an undesirable pronounced fall in blood pressure) may impair the patient's ability to concentrate and react and therefore constitute a risk in situations where these abilities are of special importance (e.g. operating a vehicle or machinery).



# IPCA-FRUSEMIDE

---

Likely to produce minor or moderate adverse effects on the ability to drive or use machinery.

## 4.8 Undesirable effects

Whenever adverse reactions are moderate or severe, furosemide dose should be reduced or therapy withdrawn.

### Metabolism and Nutritional Disorders

As with other diuretics, electrolytes and water balance may be disturbed during therapy with furosemide, especially in patients receiving high doses for a prolonged period. The serum potassium concentration may decrease, especially at the commencement of treatment (owing to the earlier onset of action of furosemide).

Excessive diuresis may give rise, especially in elderly patients and children, to circulatory disturbances such as headache, dizziness, dry mouth or visual impairment, as symptoms of hypovolaemia. In extreme cases, hypovolaemia and dehydration may lead to hypotension, circulatory collapse and, in elderly patients in particular, thrombophilia. However, with individualised dosage, acute haemodynamic reactions are generally not to be expected, although diuresis sets in rapidly.

All saluretics may cause hypokalaemia, mainly in cases of low potassium diet, vomiting or chronic diarrhoea.

Factors such as underlying diseases (liver cirrhosis, cardiac failure), concomitant medication (see Interactions) or nutritional inadequacies (excessive restriction of salt intake), may lead to sodium (hyponatraemia) chloride (hypochlorhaemic) or other electrolyte or fluid deficiencies which may produce a fall in orthostatic blood pressure, calf muscle spasms, anorexia, weakness, dizziness, drowsiness, apathy, vomiting and confusion.

Furosemide may lower the serum calcium level (hypocalcaemia) which may trigger a state of increased neuromuscular irritability. Furosemide may cause a rise in serum cholesterol and triglyceride.

Hypomagnesaemia and in rare cases, tetany or cardiac arrhythmias have been observed as a consequence of increased renal magnesium loss.

Treatment with furosemide may lead to transitory increases in urine volume, blood creatinine and urea levels. Serum levels of uric acid (hyperuricaemia) may increase and attacks of gout may occur.

Pre-existing metabolic alkalosis (e.g. due to decompensated liver cirrhosis) may be aggravated during furosemide treatment. Metabolic alkalosis has been reported with furosemide use.

Treatment with furosemide has occasionally caused reduced glucose tolerance and deterioration in cases of manifest diabetes, or made latent diabetes manifest.

Pseudo-Bartter syndrome in the context of misuse and/or long-term use of furosemide has been reported.

# IPCA-FRUSEMIDE

---

Very common: electrolyte disturbances (including symptomatic), dehydration and hypovolaemia especially in elderly patients, increased blood creatinine, increased blood triglycerides.

Common: hyponatraemia, hypochloraemic, hypokalaemia, blood cholesterol increased, blood uric acid increased and attacks of gout, urine volume increased.

Uncommon: Impaired glucose tolerance. Latent diabetes may manifest.

## **Gastrointestinal Disorders and Hepato-biliary Disorders**

Reactions with normal doses are uncommon with furosemide. They include anorexia, oral and gastric irritation, nausea, vomiting, cramping, diarrhoea and constipation.

In isolated cases, acute pancreatitis and increases in liver transaminases have been observed. Additionally, intrahepatic cholestasis and jaundice have been reported. Furosemide may increase the bile flow and distend the biliary tree which is already obstructed.

## **Central Nervous System**

Reactions such as dizziness, vertigo, paraesthesia, headache and blurred vision occasionally accompany furosemide induced diuresis.

## **Ear and Labyrinth Disorders**

Reversible hearing impairment and tinnitus and rarely, permanent tinnitus and impairment of hearing have been observed, especially in patients with markedly reduced renal function or hypoproteinaemia (e.g. in nephrotic syndrome). This occurs particularly in patients who are also receiving medicines known to be ototoxic.

Cases of deafness, sometimes irreversible have been reported after oral or IV administration of furosemide.

## **Skin and Subcutaneous Tissue Disorders**

Allergic reactions may occasionally occur in the form of dermatitis, including rash, urticaria and rare cases of exfoliative dermatitis, necrotising angitis, bullous lesions or eruptions, pemphigoid, Stevens-Johnson syndrome, toxic epidermal necrolysis, erythema multiforme and purpura. Photosensitivity reactions have been reported. AGEP (acute generalised exanthematous pustulosis) and DRESS (Drug Rash with Eosinophilia and Systemic Symptoms) have been reported with furosemide use.

## **Blood and the Lymphatic System Disorders**

Common: haemoconcentration.

Uncommon: thrombocytopenia.

The following rare adverse reactions have been reported: eosinophilia, thrombophlebitis, haemolytic or aplastic anaemia, leukopaenia, and agranulocytosis.

# IPCA-FRUSEMIDE

---

## **Congenital and Familial/Genetic Disorders**

The persistence of patent ductus arteriosus when furosemide has been administered to a premature infant during the first weeks of life has been reported

## **Renal and Urinary System**

Excessive diuresis and dehydration could cause transient elevation of creatinine and BUN and reduction of GFR. Rare cases of tubulointerstitial nephritis have been reported. In elderly men with prostatic hypertrophy, acute urinary retention with overflow incontinence may occur. Symptoms of existing conditions of obstructed micturition, such as uretostenosis or hydronephrosis, may be triggered or aggravated by pronounced diuresis. Interstitial nephritis has also been reported with furosemide use. In premature infants, calcium salts may be deposited in the renal tissue (nephrocalcinosis/ nephrolithiasis). In patients with a partial obstruction of urinary outflow, acute retention of urine may occur. Increases in sodium and/or chloride urine levels, and renal failure has been reported with furosemide use.

## **Vascular Disorders**

Very common: Orthostatic hypotension may occur and may be aggravated by alcohol, narcotics and barbiturates. Due to the possibility of side effects such as hypotension, patients' ability to drive or operate machinery may be impaired, especially at the commencement of therapy. Ischaemic complications have also been reported in elderly patients. A tendency for thromboses has been reported. If furosemide is administered to premature infants during the first weeks of life, it may increase the risk of persistence of patent ductus arteriosus.

Rare: Vasculitis.

Cases of thrombosis have been reported.

## **Immune System Disorders**

Severe anaphylactic or anaphylactoid reactions (e.g. with shock) is rare, but is acutely life-threatening if it does occur.

Cases of exacerbation or activation of systemic lupus erythematosus have been reported.

## **Nervous System Disorders**

Common: hepatic encephalopathy in patients with hepatocellular insufficiency.

Rare: paraesthesia.

Headache, dizziness, fainting or loss of consciousness has been reported.

## **Musculoskeletal and connective tissue disorders**

Cases of rhabdomyolysis have been reported, often in the context of severe hypokalaemia (see Section 4.3 Contraindications).

## **General Disorders and Administration Site Conditions**

Rarely, fever may occur. Restlessness has also been reported.

# IPCA-FRUSEMIDE

---

## Reporting of suspected adverse reactions

Reporting suspected adverse reactions after authorisation of the medicine is important. It allows continued monitoring of the benefit/risk balance of the medicine. Healthcare professionals are asked to report any suspected adverse reactions <https://nzphvc.otago.ac.nz/reporting/>

## 4.9 Overdose

The clinical picture in acute or chronic overdose depends primarily on the extent and consequences of electrolyte and fluid loss; e.g. dehydration, blood volume reduction, hypotension, electrolyte imbalance, cardiac arrhythmias (including AV block and ventricular fibrillation), hypokalaemia and hypochloreaemic alkalosis, and extensions of its diuretic action. Symptoms of these disturbances include severe hypotension (progressing to shock), acute renal failure, thrombosis, delirious states, flaccid paralysis, apathy and confusion.

The acute toxicity of furosemide has been determined in mice, rats and dogs. In all three, the oral LD<sub>50</sub> exceeded 1000mg/kg body weight, while the intravenous LD<sub>50</sub> ranged from 300 to 680mg/kg. The acute intragastric toxicity in neonatal rats is 7 to 10 times that of adult rats. The concentration of furosemide in biological fluids associated with toxicity or death is not known.

No specific antidote to furosemide is known. If ingestion has only just taken place, attempts may be made to limit further systemic absorption of the active ingredient by measures such as activated charcoal.

Treatment of overdosage is supportive and consists of replacement of excessive fluid and electrolyte losses. Serum electrolytes, carbon dioxide level and blood pressure should be determined frequently. Adequate drainage must be assured in patients with urinary bladder outlet obstruction (such as prostatic hypertrophy). Haemodialysis does not accelerate furosemide elimination.

For advice on the management of overdose please contact the National Poisons Centre on 0800POISON (0800 764766).

## **5. PHARMACOLOGICAL PROPERTIES**

### **5.1 Pharmacodynamic Properties**

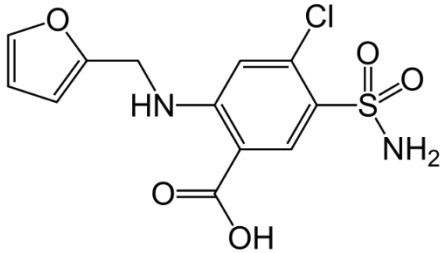
Pharmacotherapeutic group: High-ceiling diuretic sulfonamides, loop diuretics

ATC code: C03CA01

Chemical Structure:

# IPCA-FRUSEMIDE

---



Furosemide is an anthranilic acid derivative.

Chemical name: 4-chloro-2-(furan-2-ylmethylamino)- 5-sulfamoylbenzoic acid

Molecular Formula: C<sub>12</sub>H<sub>11</sub>ClN<sub>2</sub>O<sub>5</sub>S

CAS Registry Number: 54-31-9.

Molecular weight: 330.7g/mol

## Mechanism of action

Furosemide is a potent diuretic. It inhibits sodium and chloride absorption in the ascending limb of Henle's loop and in both the proximal and distal tubules. The high degree of efficacy is due to this unique site of action. The action on the distal tubule is independent of any inhibitory effect on carbonic anhydrase or aldosterone.

Furosemide may promote diuresis in cases which have previously proved resistant to other diuretics.

Furosemide has no significant pharmacological actions other than on renal function.

## 5.2 Pharmacokinetic properties

### Absorption

Furosemide is rapidly absorbed from the gastrointestinal tract. Absorption rates in healthy subjects have been reported from 60-69% and from 43-46% in patients with end stage renal failure.

The onset of diuresis following oral administration is within 1 hour. The peak effect occurs within the first or second hour. The duration of diuretic effect is 6 to 8 hours.

In fasted normal men, the mean bioavailability of furosemide from furosemide tablets is 64% of that from an intravenous injection of the medicine. Although furosemide is more rapidly absorbed from an oral solution (50 minutes) than from the tablet (87 minutes), peak plasma levels and area under the plasma concentration-time curves do not differ significantly. Peak plasma concentrations increase with increasing dose but times-to-peak do not differ among doses.

# IPCA-FRUSEMIDE

---

## Distribution

Furosemide is extensively bound to plasma proteins, mainly to albumin. Plasma concentrations ranging from 1 to 400µg/mL are 91 to 99% bound in healthy individuals. The unbound fraction averages 2.3 to 4.1% at therapeutic concentrations.

## Biotransformation

Recent evidence suggests that furosemide glucuronide is the only, or at least the major, biotransformation product of furosemide in man.

## Elimination

In patients with normal renal function, approximately 80% of an intravenous or intramuscular dose is excreted in the urine within 24 hours. Significantly more furosemide is excreted in urine following intravenous injection than after the tablet. Urinary excretion is accomplished both by glomerular filtration and proximal tubular secretion, which accounts for roughly 66% of the ingested dose, the remainder being excreted in the faeces. A small fraction is metabolised by cleavage of the side chain.

## Half Life

Furosemide has a biphasic half-life in the plasma with  $T_{1/2}$  ranging up to 100 minutes.  $T_{1/2}$  is prolonged by renal and hepatic insufficiency and in new born infants.

## 5.3 Preclinical safety data

Not applicable

## **6. PHARMACEUTICAL PARTICULARS**

### 6.1 List of excipients

IPCA-FRUSEMIDE 20mg and 40mg tablets contain the following inactive ingredients:

- Lactose monohydrate
- Corn starch
- Pregelatinised starch
- Sodium starch glycollate
- Magnesium stearate

### 6.2 Incompatibilities

See Section 4.5 Interaction with other medicines and other forms of interaction.

### 6.3 Shelf life

Shelf life: 3 years from the date of manufacture

# IPCA-FRUSEMIDE

---

## 6.4 Special precautions for storage

Store at or below 25°C

Protect from light.

## 6.5 Nature and contents of container

IPCA-FRUSEMIDE 20mg and 40mg: HDPE bottles containing 100, 250 or 1000 tablets

Note that all strengths and/or pack sizes may not be available.

## 6.6 Special precautions for disposal

No special requirements for disposal.

Any unused medicine or waste material should be disposed of in accordance with local requirements.

## **7. MEDICINE SCHEDULE**

Prescription Medicine

## **8. SPONSOR**

Ipsca Pharma (NZ) Pty Limited  
3-A, St. Oswalds Road  
Greenlane  
AUCKLAND 1061  
Phone: +64 21 339188

## **9. DATE OF FIRST APPROVAL**

04 April 2019

## **10. DATE OF REVISION OF THE TEXT**

01 June 2023

## **SUMMARY TABLE OF CHANGES**

Section changed	Summary of new information
9 and 10	Product Gazetted
8	Sponsor- contact number